

Incremental encoders

Mini series - blind or through hollow shaft

10...2048 pulses per revolution

BHK



BHK with blind hollow shaft

Features

- Mini encoder with blind or through hollow shaft
- Optical sensing method
- Max. 2048 pulses per revolution
- Housing ø40 mm
- Operation speed max. 12000 rpm
- Blind or through hollow shaft
- Versatile mounting accessories

Technical data - electrical ratings

Voltage supply	5 VDC ±10 % 10...30 VDC
Consumption typ.	60 mA (5 VDC, w/o load) 30 mA (24 VDC, w/o load)
Pulses per revolution	10...2048
Reference signal	Zero pulse, width 90°
Sensing method	Optical
Output frequency	≤100 kHz
Output signals	A 90° B, N + inverted
Output stages	Linedriver/RS422 Push-pull short-circuit proof
Interference immunity	DIN EN 61000-6-2
Emitted interference	DIN EN 61000-6-3
Approval	UL approval / E217823

Technical data - mechanical design

Size (flange)	ø40 mm
Shaft type	ø6 mm (through hollow shaft) ø12 mm (blind hollow shaft)
Protection DIN EN 60529	IP 42
Operating speed	≤12000 rpm
Operating torque typ.	0.0021 Nm (IP 42)
Materials	Housing: polyamide black Flange: aluminium
Operating temperature	-20...+85 °C
Relative humidity	95 % non-condensing
Resistance	DIN EN 60068-2-6 Vibration 10 g, 10-200 Hz DIN EN 60068-2-27 Shock 50 g, 11 ms
Connection	Connector M9, 5-pin Connector M9, 8-pin Cable 1 m
Weight approx.	100 g

Incremental encoders

Mini series - blind or through hollow shaft

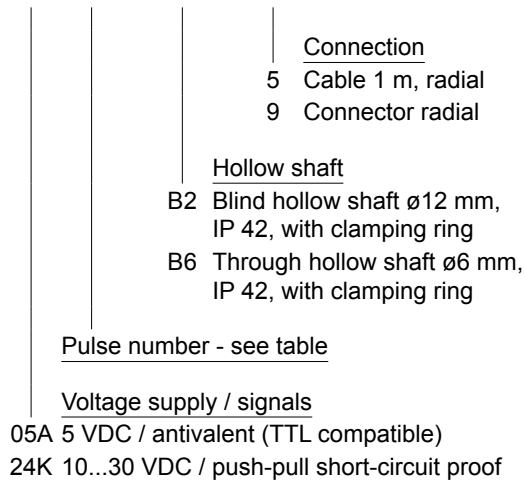
10...2048 pulses per revolution

BHK

Part number

BHK 16.

		-		-	
--	--	---	--	---	--



Accessories

Connectors and cables

10132983	Female connector M9, 8-pin, straight
11094664	Female connector M9, 8-pin, straight, 2 m cable
11094665	Female connector M9, 8-pin, straight, 5 m cable
11094660	Female connector M9, 5-pin, straight, 2 m cable
11094662	Female connector M9, 5-pin, straight, 5 m cable

Mounting accessories

10158423	Set of spring plate (round) for hollow shaft encoder ($<\varnothing$ 8 mm)
10158424	Set of spring plate (square) for hollow shaft encoder ($\geq\varnothing$ 8 mm)

Pulse number

10	50	120	360	1024
20	60	200	500	2000
30	100	250	1000	2048

Other pulse numbers on request.

Trigger level

Outputs 05A	Complementary Linedriver RS422
Output level High	$>2,4$ V ($I = -20$ mA)
Output level Low	$<0,4$ V ($I = 20$ mA)
Load High	<20 mA
Load Low	<20 mA

Outputs 24K (125 Ω)	Push-pull short-circuit protection
Output level High	$>+V_s - 5,7$ V ($I = -30$ mA)
Output level Low	$<5,7$ V ($I = 30$ mA)
Load High	<30 mA
Load Low	<30 mA

Incremental encoders

Mini series - blind or through hollow shaft

10...2048 pulses per revolution

BHK

Terminal assignment

Cable

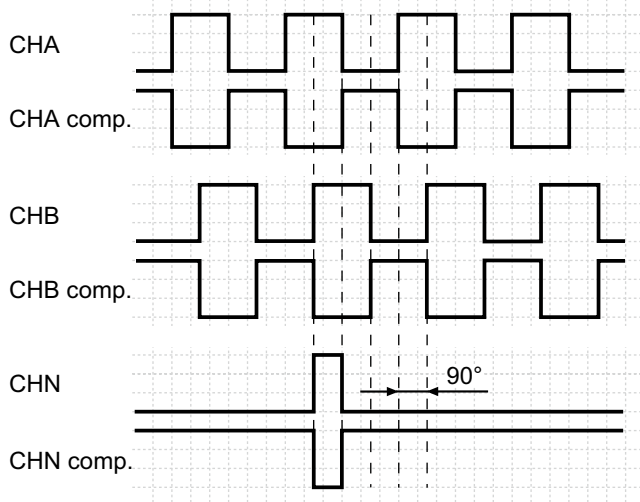
for connection reference -5

05A		24K	
Core colour	Signals	Core colour	Signals
brown	+Vs	brown	+Vs
green	CHA	green	CHA
red	CHA compl.	–	–
yellow	CHB	yellow	CHB
blue	CHB compl.	–	–
pink	CHN	pink	CHN
grey	CHN compl.	–	–
white	0 V	white	0 V
Cable data	8 x 0.14 mm ²	5 x 0.14 mm ²	
Screen	connected to flange		

Output signals

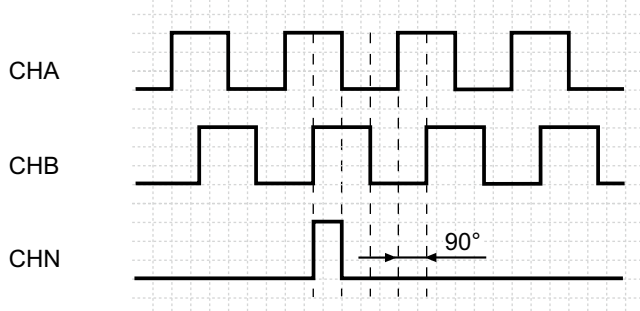
Counter clockwise rotating direction when looking at the flange.

05A



Counter clockwise rotating direction when looking at the flange.

24K



Connector M9 male

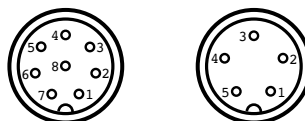
for connection reference -9

05A		
Connector	Core colour*	Signals
Pin 1	white	0 V
Pin 2	brown	+Vs
Pin 3	green	CHA
Pin 4	yellow	CHB
Pin 5	grey	CHN compl.
Pin 6	pink	CHN
Pin 7	blue	CHB compl.
Pin 8	red	CHA compl.

24K

Connector	Core colour*	Signals
Pin 1	white	0 V
Pin 2	brown	+Vs
Pin 3	brack	CHA
Pin 4	blue	CHB
Pin 5	grey	CHN

*these core colours are valid for the assembled mating connectors (see accessories)



Incremental encoders

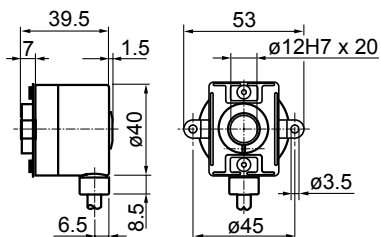
Mini series - blind or through hollow shaft

10...2048 pulses per revolution

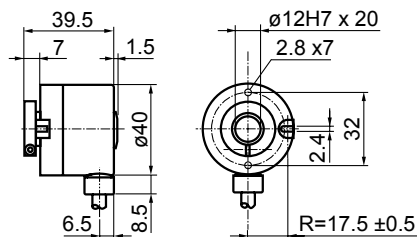
BHK

Dimensions

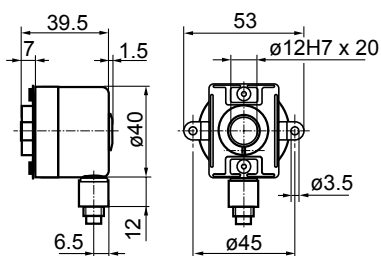
BHK clamping ring and spring washer



BHK clamping ring



BHK connector output radial



BHK connector dimensions

